



2218 E JOHN ST

SEATTLE, WA 98112



1,105



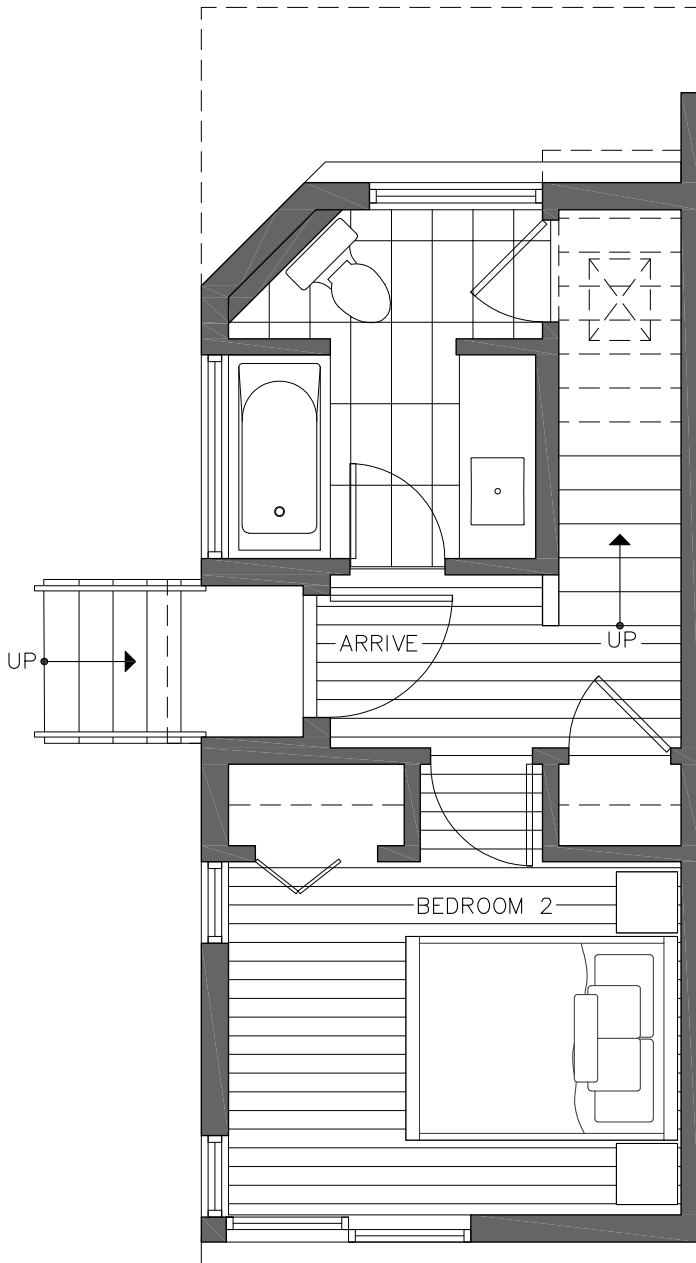
2



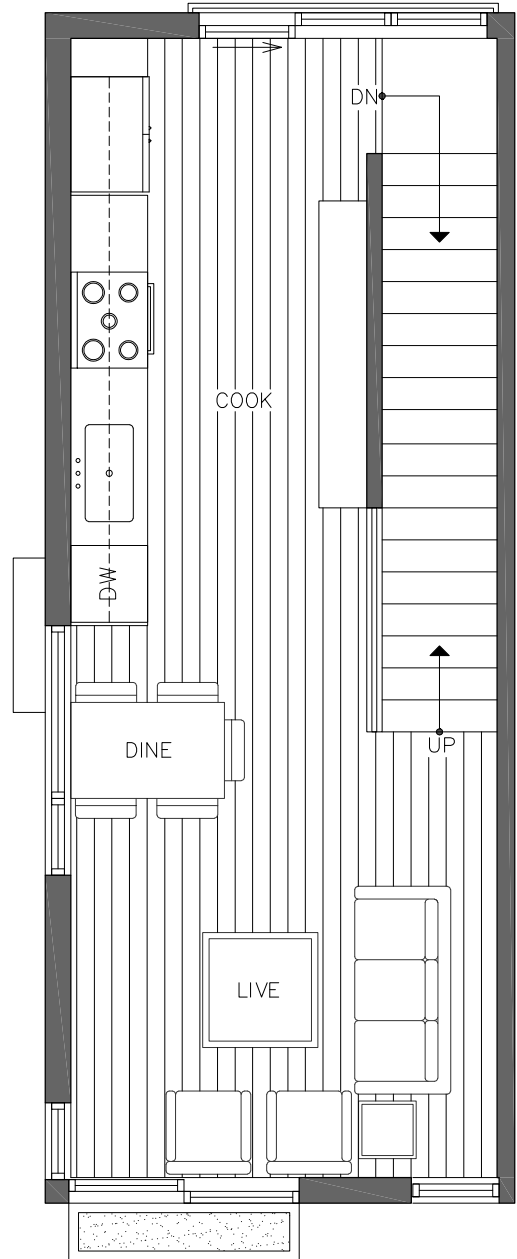
1.75



PARKING SPACE



FIRST FLOOR



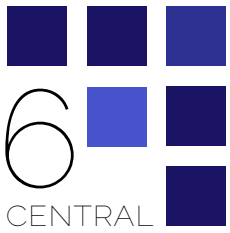
SECOND FLOOR

PID: 418

ISOLAHOMES.COM | 206.960.4000 | 13555 SE 36TH ST., SUITE 320, BELLEVUE, WA 98006

Disclaimer: Floor plans and site plans are for illustrative purposes only. In a continuing effort to improve products and designs, final construction elevations, square footages, floor plans and/or materials and colors may vary. Buyer to verify to their own satisfaction.





2218 E JOHN ST

SEATTLE, WA 98112



1,105



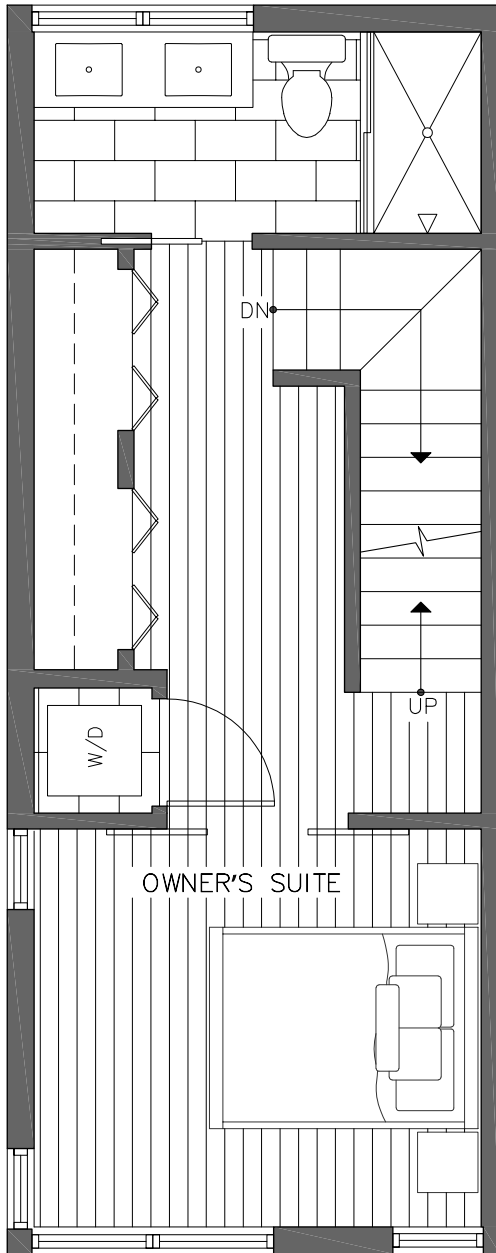
2



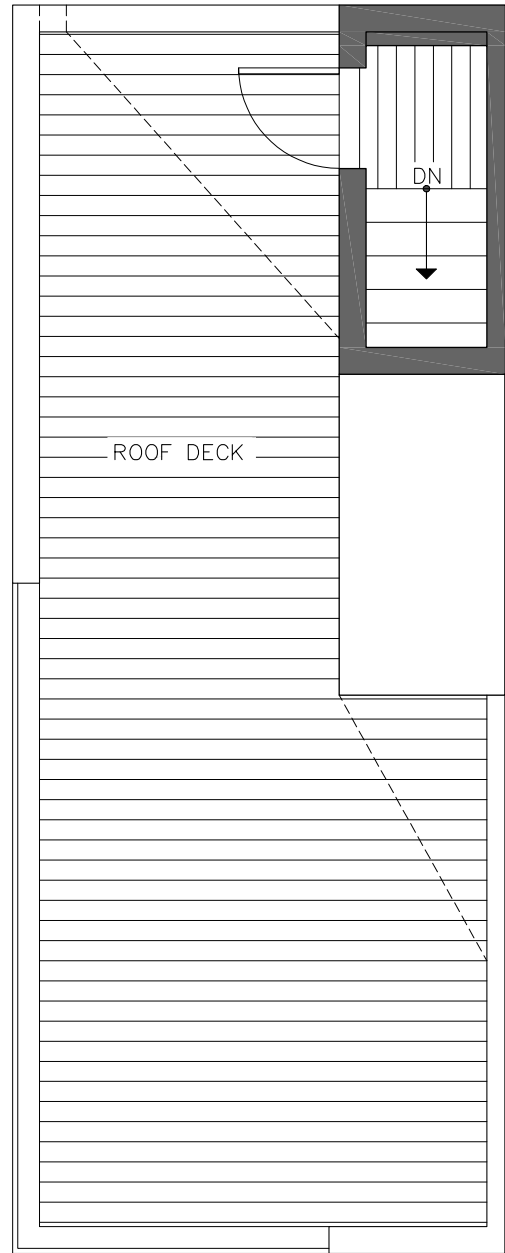
1.75



PARKING SPACE



THIRD FLOOR



ROOF DECK



PID: 418

ISOLAHOMES.COM | 206.960.4000 | 13555 SE 36TH ST., SUITE 320, BELLEVUE, WA 98006

Disclaimer: Floor plans and site plans are for illustrative purposes only. In a continuing effort to improve products and designs, final construction elevations, square footages, floor plans and/or materials and colors may vary. Buyer to verify to their own satisfaction.

